

# YASKAWA

## AC SERVO DRIVES SIGMA-7 SERIES

EN

DE



- ▶ 02 **About YASKAWA**
- ▶ 03 The New Sigma-7 Series
- ▶ 04 **Seven Reasons for Sigma-7**
- ▶ 06 Next Generation Servo Systems
- ▶ 07 Total System Solutions
- ▶ 08 Savings through Performance
- ▶ 09 Safety in Motion
- ▶ 10 Enhanced Vibration Suppression
- ▶ 11 Simplify your Life with the Sigma-7 Series
- ▶ 12 Open for Challenging Applications
- ▶ 13 **The 200 V Series**
- ▶ 14 Product Overview 200 V
- ▶ 16 Combination Tables
- ▶ 17 Model Designations 200 V
- ▶ 19 **The 400 V Series**
- ▶ 20 Product Overview 400 V
- ▶ 21 Combination Tables
- ▶ 22 Model Designations 400 V

## Experience and Innovation

Since 1915 YASKAWA has manufactured and supplied products for machine building and industrial automation. Our standard products as well as tailor-made solutions are well known and have a high reputation for outstanding quality and reliability.

YASKAWA is the leading global manufacturer of inverter drives, servo drives, machine controllers, medium voltage inverters, and industrial robots.

We have always been a pioneer in motion control and drive technology, launching product innovations, which optimise the productivity and efficiency of both machines and systems.

Today YASKAWA produces more than 1.8 million inverters per year. Considering this, YASKAWA is probably the biggest inverter manufacturer in the world.



YASKAWA Motoman Robots

Furthermore, with a yearly production of more than 800,000 servo motors and 20,000 robots YASKAWA offers a wide range of products for drive automation processes in many different industries such as mining, steel, machine tools, automotive, packaging, woodworking, textiles and semiconductors.

YASKAWA technology is used in all fields of machine building and industrial automation and has a high reputation for their outstanding performance and quality.



YASKAWA Eschborn, Germany

## Wherever You Are – Our Local Support is Near.



Employing more than 14,600 People Worldwide

More than 1,350 Employees in Worldwide Service Network

More than 1,500 Employees in Europe



## The New Sigma-7 Series

Quick – Fast – Reliable

The development of the new Sigma-7 series focused on three main goals: consistently fast commissioning, high production output and maximum operational reliability. The series offers a powerful response to today's market requirements for both machine constructors and final customers in the production industry. Sigma-7 offers particularly great potential for packaging plants, semiconductor manufacturing, wood processing and digital printing machines.



### QUICK SETUP IN JUST 3 MINUTES

Presets in the amplifier software simplify commissioning. A 'tuning-less' function allows immediate use of the Sigma-7 without the need for complex parametrisation or special knowledge of control equipment, while an auto-tuning function ensures quick adjustment.



### SPACE SAVINGS

New book-style housing supports gap-free, side-by-side installation of amplifiers even in small spaces. This makes it possible to realize a high performance density inside a cabinet. The needed space is reduced to a minimum, allowing it and the drive electronics to be integrated in the machine.



### ECO FRIENDLY

Sigma-7 motor efficiency reduces heat generation by up to 20%. The possible DC Power coupling of axes allows energy sharing and energy savings of up to 30%.



### COST SAVINGS

Sigma-7 reduces the overall costs by providing faster machine setup, higher throughput with more products in less time and reduced machine downtimes due to the high reliability of our products.



## Seven Reasons for Sigma-7

The Sigma Series of Servo Drives has evolved into the Sigma-7 Servo Drives, which provides you with the ultimate experience in seven key areas and delivers the optimal solution that only YASKAWA can offer.



1

### Comprehensive Motor and Amplifier Power Range

#### Wide power range

- ▶ Very compact motors from 50 W to 15 kW
- ▶ Linear motors iron core and ironless with a peak force up to 7560 N

2

### Savings through Performance

#### Lower production costs

- ▶ Speed loop bandwidth of 3.1 kHz
- ▶ Shorter settling time, reduced positioning time, higher throughput

#### No additional cooling necessary

- ▶ Ambient temperature -5 – 55 °C (max. 60 °C with derating)

#### Energy savings and higher productivity

- ▶ High peak torque, fast acceleration, no amplifier oversizing
- ▶ Lightweight mechanics

#### Higher performance

- ▶ Overload 350% for 3 – 5 seconds
- ▶ High peak torque, fast acceleration



3

### Safety Features

#### Smooth integration of mandatory legal safety standards

- ▶ The STO function is implemented by default in all Sigma-7 series servo amplifiers
- ▶ Build safer machines - Sigma-7 satisfies the requirements of SIL 3 and PL-e
- ▶ The safety functions SS1, SS2 and SLS are integrated by using the safety module SGDV-OSA01A

4

### High Efficiency

#### Very low heat generation

- ▶ Optimized magnetic circuit improves motor efficiency
- ▶ Improved motor efficiency reduces heat generation by about 20%

5

### High Accuracy

#### Next level 24-bit absolute encoder for maximum accuracy

- ▶ Resolution of 16 million pulses per revolution for extremely precise positioning

6

### Impressive System Performance

#### Very high precision teamed up with fast, smooth operation

- ▶ Ripple compensation for highest demands in smoothness and dynamics
- ▶ Even for machines for which speed loop gains cannot be set high

7

### Outstanding Reliability

#### Even more reliability for your production

- ▶ More than 9,000,000 servo systems in the field
- ▶ Improved machine reliability, reduced service and maintenance costs, less downtime



## Sigma-7 – Next Generation Servo Systems

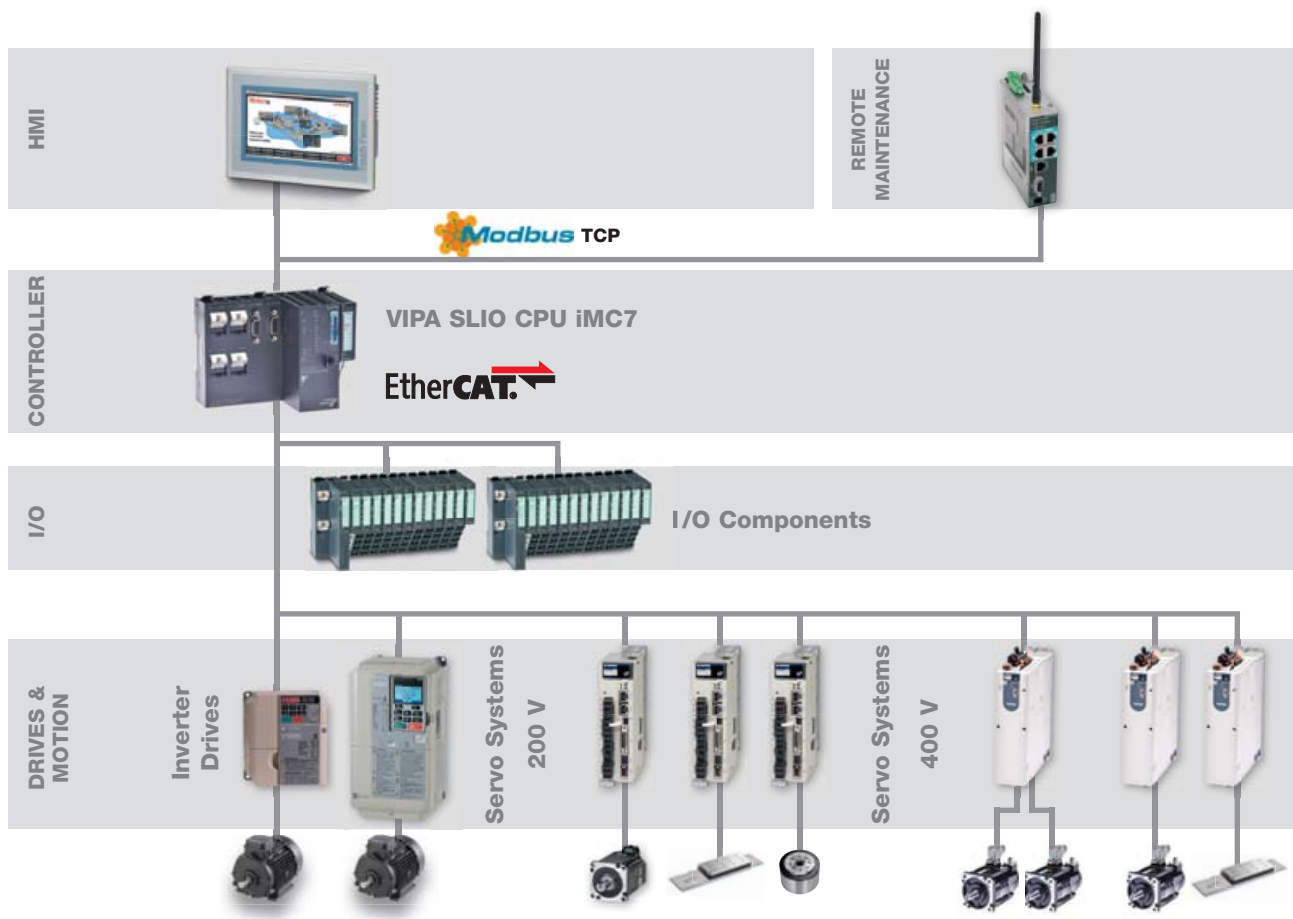
With more than 9 million servo systems in the field, YASKAWA has a lot of experience and technical know-how in Motion and Control. The Result: Excellent performance and an extremely low fault rate. With the new Sigma-7 series, YASKAWA has managed to create a masterpiece in reliable precision performance. Thanks to its new features, start-up is possible in just a few minutes. Quick, application specific drive adjustments and maximised product output are guaranteed.

### SERVOPACKs

- ▶ Single- & Double Axis Amplifier
- ▶ One amplifier for Linear & Rotary Motors
- ▶ SIL 3 for STO, PL-e CAT 3
- ▶ Speed frequency response: 3.1 kHz
- ▶ Advanced Safety functions SS1, SS2, SLS
- ▶ Feedback options
- ▶ Ripple compensation, vibration suppression, etc.

### Servomotors

- ▶ 24-bit high-resolution encoder installed
- ▶ High efficiency, low heat generation
- ▶ Downsizing by up to 20%
- ▶ Flange compatible with Sigma-5
- ▶ Three motor models available
  - Low inertia SMG7A up to 7 kW
  - Medium inertia SGM7J up to 750 W
  - Medium inertia SGM7G up to 15 kW



## Total System Solutions

With the combined know-how of YASKAWA and VIPA, we can offer our customers Total System Solutions as well as individual components for many applications in the automation industry.

### Machine Controllers – MP 3200 IEC & MP 3300 IEC

High performance machine controller for automation technology. YASKAWA machine controllers manage complex systems with servo and inverter drives. High-speed communication provides high-performance and high-accuracy motion control, even for complex movements.

- ▶ Up to 62 axes
- ▶ Communication: Modbus TCP/IP, MECHATROLINK-III, Ethernet (100 Mbps)
- ▶ PLCOpen function blocks
- ▶ Reusable code library



### iMC7 + SPEED7 Studio + Sigma-7 – High Performance Motion Control System

YASKAWA's Experience in Motion Control, combined with VIPA's Experience in PLC technology, is the foundation for a new standard in automation technology. SLIO CPU iMC7, a PLC with integrated Motion Control functions.

- ▶ High Performance PLC combined with High Performance drive technology
- ▶ Programmable with SPEED7 Studio by VIPA: Hardware configuration, Communication, PLC Programming, Motion Control, Visualisation, etc.
- ▶ Real time Ethernet-Communication Interface EtherCAT
- ▶ Connection with I/O's, Sigma-7 Servo Drives and Inverter Drives
- ▶ Control and Drive Technology solutions from one source



### VIPA Touchpanels

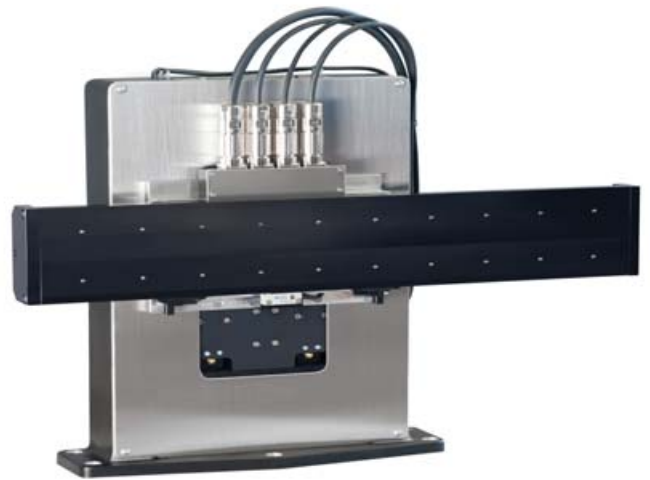
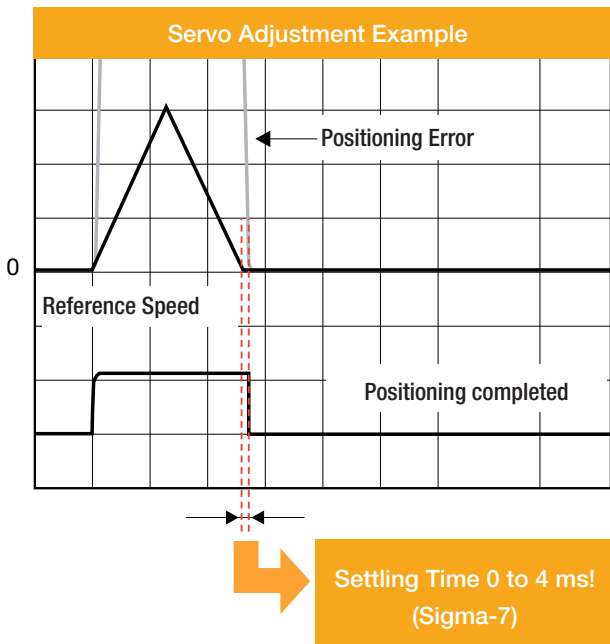
VIPA professional touch panels with display sizes from 4.3" to 12.1", operating system Windows Embedded CE 6.0 and Runtime Movicon 11 can be used universally. VIPA eco panels in 4 different display sizes from 4.3" to 15" are designed for maximum reliability and flexibility, as well as longevity and quality.





## Savings through Performance

With a best in class frequency response of 3.1 kHz, Sigma-7 SERVOPACKS can reduce settling time to less than 4 ms. Compared to a standard system with for example 50 ms settling time, a Pick & Place unit based on Sigma-7 components can save a significant amount of money.



## Shorter Settling Time increases your Revenue

Pick and Place Example with 50 ms Settling Time

Axis Length	Move	Settle	Move	Settle	Time per Part	Parts per Minute	Parts per Hour	Price per Part	Revenue per Hour
X = 200 mm	0.5 s	0.05 s	0.5 s	0.05 s	1.6 s	37.5	2250	€ 0.1	€ 225.00
X = 200 mm	0.2 s	0.05 s	0.2 s	0.05 s					
<b>Total</b>	<b>0.5 s</b>	<b>0.1 s</b>	<b>0.7 s</b>	<b>0.1 s</b>					

Pick and Place Example with 4 ms Settling Time

Axis Length	Move	Settle	Move	Settle	Time per Part	Parts per Minute	Parts per Hour	Price per Part	Revenue per Hour
X = 200 mm	0.5 s	0.004 s	0.5 s	0.004 s	1.416 s	42.37	2542	€ 0.1	€ 254.24
X = 200 mm	0.2 s	0.004 s	0.2 s	0.004 s					
<b>Total</b>	<b>0.5 s</b>	<b>0.008 s</b>	<b>0.7 s</b>	<b>0.008 s</b>					

Revenue per Hour:  
**29.24 €**

Revenue per 16 Hours:  
**467.84 €**

Revenue per 5 Days:  
**2,339.20 €**

Revenue per Year:  
**116,690.00 €**



# Safety in Motion

Machine movements represent a major source of hazard for operators and personnel carrying out maintenance tasks. Typical situations requiring safe machine states occur during commissioning, in setup mode, troubleshooting and when operating or maintenance personnel are required to approach the machine.

- ▶ Sigma-7 servo drive functionality allows smooth integration of the mandatory legal safety standards.
- ▶ The STO function is implemented by default in all Sigma-7 series servo amplifiers.
- ▶ The optional Safety module SGDV-OSA01A allows the expansion of SS1, SS2 and SLS safety functions (SIL2, PLd).

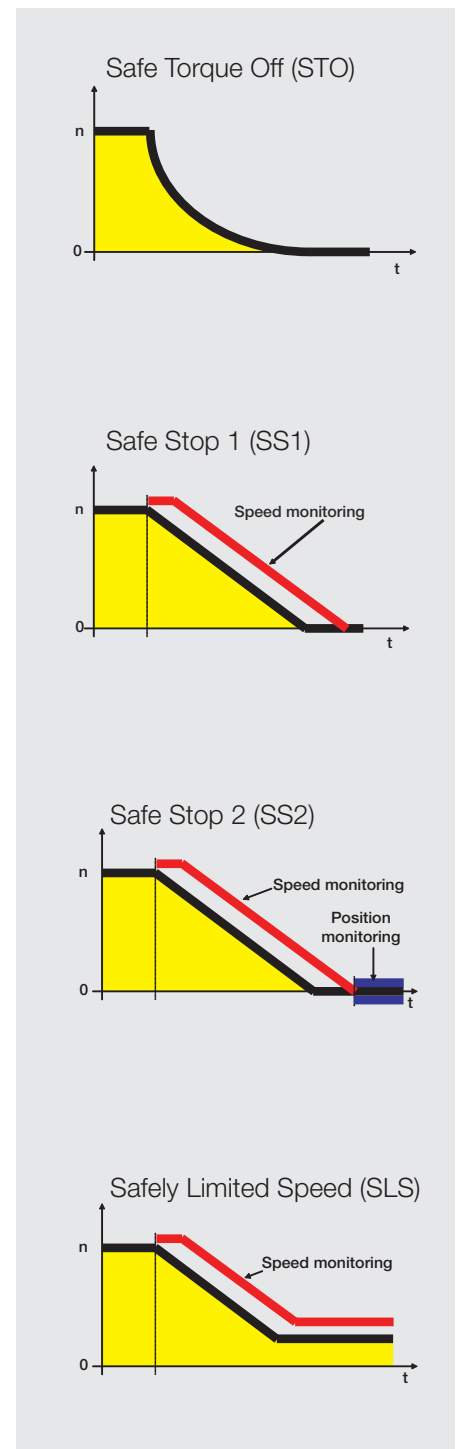
With the coming into effect of the standard EN ISO 13489 1:2008 “Safety of machinery – Safety-related parts of control systems”, the construction of safe machines will now be assessed either according to the performance level (PL a – e) or according to the safety integrity level (SIL 1 – 4).

The safety relevant functions for variable speed drives are defined in the standard IEC 61800-5-2.

The Sigma-7 series of servo drives enables you to realize safe and cost-effective automated motion applications.



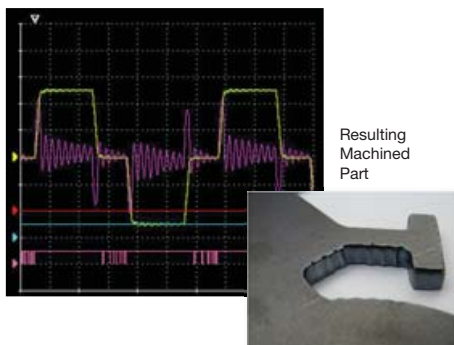
	Safety Standards	Performance Level & Category
Safety of machinery	EN ISO 13849-1	PL-e (CAT3)
	IEC 60204-1	Stop Category 0
Functional Safety	IEC 61508	SIL 3
	IEC 62061	SIL CL3
	IEC 61800-5-2	STO



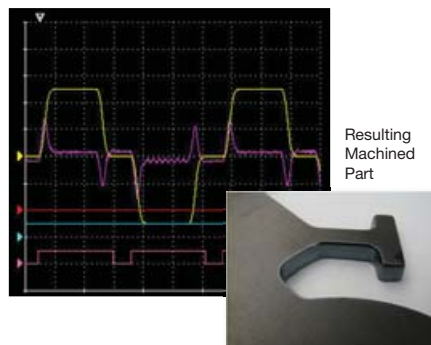
## Enhanced Vibration Suppression

Existing functions to minimize vibration have been enhanced and new ones added, thus improving tracking and further improving settling time. Vibration and noise during operation have also been reduced, along with vibration when stopping, resulting in very smooth edges of machined parts.

Without Vibration Suppression



With Vibration Suppression



### Tuning-less function

**“Get up and run” quickly after connecting the motor.**

Even without servo adjustment and with load changes, an oscillation- and vibration-free drive is possible with up to 30 times the load moment of inertia.

- ▶ Settling time: 100 to 150 ms.

### Advanced autotuning

**Minimize settling time with less vibration.**

The reference filter and feedback gain adjustment functions have a new automatic feed forward gain adjustment for optimal adjustment performance. The friction compensation function automatically cancels out the effect of friction on machine characteristics.

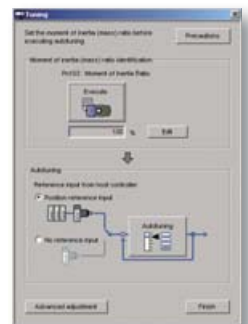
- ▶ Settling time: 10 ms.

### “One-parameter” tuning

**Fine tuning made easy.**

Fine tuning can tweak machine performance to the max.

- ▶ Settling time: 0 to 4 ms.



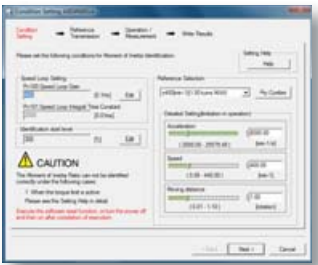
# Simplify your Life with the Sigma-7 Series

The Sigma-7 Series provides an easy and quick adjustment for your servo solution. That saves time and money.



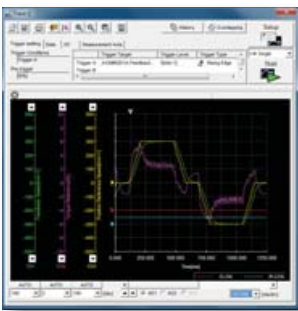
## Software Setup Wizard

Simple parameter setup with wizard guided input.



## Wiring check function

The SigmaWin+ wiring check function checks your wiring in a single operation.



## Trace function

Real-time trace of adjustment state facilitates instantaneous monitoring.

## Full of handy functions for startup and more effective operation!

Optimal selection for your application with consideration of moment of inertia, dynamic braking resistance, etc.

## Maintenance

Faster troubleshooting with alarm diagnostic function – presumes possible causes of alarm and immediately displays suggested corrective actions.

Unpacking

Installation and Wiring

Basic Parameter Setting

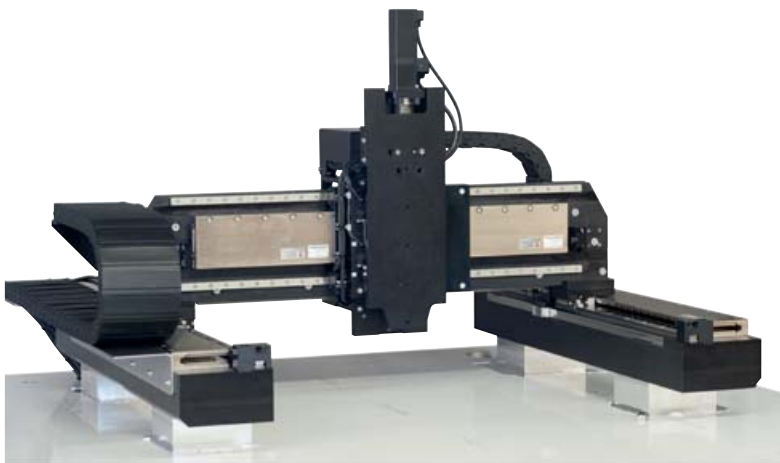
Trial Operation

Gain and Filter Adjustment (Tuning)

Operation

## Open for Challenging Applications

YASKAWA provides equipment for a broad range of applications and offers support in all engineering tasks. This way YASKAWA will find the perfect solution for common tasks and complex automation challenges.



## Solutions for common tasks

Quick and easy set-up and no configuration effort - these are the benefits of the YASKAWA out-of-the-box solutions. And in case you want to upgrade a solution the whole Sigma-7 system can easily be used for any new task.

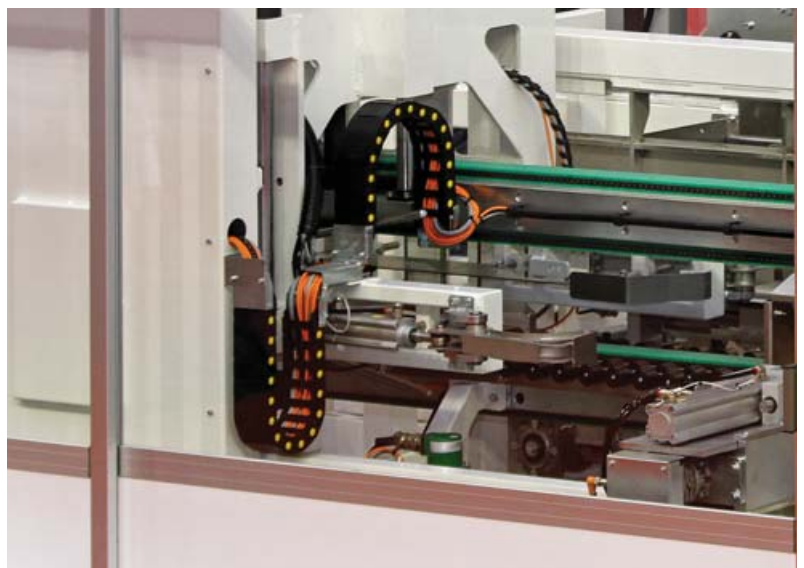
The following solutions are currently available:

- ▶ Gantry
- ▶ Pick & Place
- ▶ Beam

## Complete Solutions

YASKAWA offers comprehensive customized automation solutions with powerful hardware, including controller, visualization, drive concept and industrial robots. Our motion control products are developed to control all functions in machine process control including motion control, PLC functionality, I/O, sequential logic and process algorithms. Controller integration lowers system cost, increases performance, reduces required panel space and unifies programming.

Process monitoring and diagnostics are inherent features of our platform. These advancements increase product throughput and reduce machine downtime. With our systems in the field productivity increases by more than 200% have been achieved. Smoother running and e-stop recovery routines lessen mechanical wear and reduce down time.





# The 200 V Series

## Amplifier

- ▶ Single & three-phase input
- ▶ Embedded Fieldbus
  - Pulse train / analog input
  - MECHATROLINK-II
  - MECHATROLINK-III
  - EtherCAT
- ▶ Single & double axis amplifier

## Motors

- ▶ Very compact design
- ▶ Available from 50 W to 15 kW



# Product Overview 200 V

## Servomotors

Rotary	<p>SGM7A</p> <ul style="list-style-type: none"> <li>▶ Low inertia, high speed</li> <li>▶ 50 W - 7 kW</li> </ul> 	<p>SGM7J</p> <ul style="list-style-type: none"> <li>▶ Medium inertia, high speed</li> <li>▶ 50 W - 750 W</li> </ul> 	<p>SGM7G</p> <ul style="list-style-type: none"> <li>▶ Medium inertia, large torque</li> <li>▶ 300 W - 15 kW</li> </ul> 
	<p>SGMCS</p> <ul style="list-style-type: none"> <li>▶ Small capacity, coreless</li> <li>▶ Rated: 2 Nm - 35 Nm Peak: 6 Nm - 105 Nm</li> </ul> 	<p>SGMCMV</p> <ul style="list-style-type: none"> <li>▶ Small capacity, with iron core</li> <li>▶ Rated: 4 Nm - 25 Nm Peak: 12 Nm - 75 Nm</li> </ul>	<p>SGMCS</p> <ul style="list-style-type: none"> <li>▶ Medium capacity, with iron core</li> <li>▶ Rated: 45 Nm - 200 Nm Peak: 135 Nm - 600 Nm</li> </ul> 
	<p>SGLG</p> <ul style="list-style-type: none"> <li>▶ Coreless model</li> <li>▶ Rated: 12.5 N - 750 N Peak: 40 N - 3000 N</li> </ul> 	<p>SGLFW2</p> <ul style="list-style-type: none"> <li>▶ Model with F-type iron core</li> <li>▶ Rated: 45 N - 2520 N Peak: 135 N - 7560 N</li> </ul> 	<p>SGLFW</p> <ul style="list-style-type: none"> <li>▶ Model with F-type iron core</li> <li>▶ Rated: 25 N - 1120 N Peak: 86 N - 2400 N</li> </ul> 
Linear	<p>SGLT</p> <ul style="list-style-type: none"> <li>▶ Model with T-type iron core</li> <li>▶ Rated: 130 N - 2000 N Peak: 380 N - 7500 N</li> </ul>		

## SERVOPACKs

SGD7S-□□□A00A

Analog Voltage/  
Pulse Train  
Reference



SGD7S-□□□A10A

MECHATROLINK-II  
communication  
Reference



SGD7S-□□□A20A

Single-axis  
MECHATROLINK-III  
communication  
Reference



SGD7W-□□□A20A

Dual-axis  
MECHATROLINK-III  
communication  
Reference



SGD7S-□□□AA0A

EtherCAT  
communication  
Reference



SGD7S-□□□AE0A

Command Option  
Attachable Type

## Option Modules

SGDV-OSA01A

Safety Module



SGD7V-OCA03A

INDEXER Module



SGDV-OCA□A

DeviceNet Module



SGDV-OFA01A

Fully closed Loop  
Module

## Combination of Rotary Servomotors and SERVOPACKs

Rotary Servomotor Model		Rated Output [W]	SERVOPACK Model	
			SGD7S-□□□□	SGD7W-□□□□
SGM7J (Medium inertia, high speed) 3000 min <sup>-1</sup>	SGM7J-A5A	50	R70A	1R6A* <sup>1</sup> , 2R8A* <sup>1</sup>
	SGM7J-01A	100	R90A	
	SGM7J-C2A	150	1R6A	1R6A, 2R8A* <sup>1</sup>
	SGM7J-02A	200		
	SGM7J-04A	400	2R8A	2R8A, 5R5A* <sup>1</sup> , 7R6A* <sup>1</sup>
	SGM7J-06A	600	5R5A	5R5A, 7R6A
	SGM7J-08A	750		
SGM7A (Low inertia, high speed) 3000 min <sup>-1</sup>	SGM7A-A5A	50	R70A	1R6A* <sup>1</sup> , 2R8A* <sup>1</sup>
	SGM7A-01A	100	R90A	
	SGM7A-C2A	150	1R6A	1R6A* <sup>1</sup> , 2R8A* <sup>1</sup>
	SGM7A-02A	200		
	SGM7A-04A	400	2R8A	2R8A, 5R5A* <sup>1</sup> , 7R6A* <sup>1</sup>
	SGM7A-06A	600	5R5A	5R5A, 7R6A
	SGM7A-08A	750		
	SGM7A-10A	1,000	120A	-
	SGM7A-15A	1,500	180A	
	SGM7A-20A	2,000		
	SGM7A-25A	2,500	200A	
	SGM7A-30A	3,000		
	SGM7A-40A	4,000	330A	
	SGM7A-50A	5,000	550A	
SGM7A-70A	7,000			
SGM7G (Medium inertia, large torque) 1500 min <sup>-1</sup>	SGM7G-03A	300	3R8A	5R5A* <sup>1</sup> , 7R6A* <sup>1</sup>
	SGM7G-05A	450		
	SGM7G-09A	850	7R6A	
	SGM7G-13A	1,300	120A	-
	SGM7G-20A	1,800	180A	
	SGM7G-30A	2,900* <sup>2</sup>	330A	
	SGM7G-44A	4,400		
	SGM7G-55A	5,500	470A	
	SGM7G-75A	7,500	550A	
	SGM7G-1AA	11,000	590 A	
SGM7G-1EA	15,000	780 A		

\*1. If you use this combination, performance may not be as good, e.g., the control gain may not increase, in comparison with using a Sigma-7 SERVOPACK.

\*2. The rated output is 2.4 kW if you combine the SGM7G-30A with the SGD7S-200A.



# Model Designations 200 V

## Rotary Servomotors

### SGM7A

Sigma-7 Series  
Servomotors:  
SGM7A

01   A   7   A   2   1  
1st + 2nd   3rd   4th   5th   6th   7th   digit

1st + 2nd digit - Rated Output	
Code	Specification
A5	50 W
01	100 W
C2	150 W
02	200 W
04	400 W
06	600 W
08	750 kW
10	1.0 kW
15	1.5 kW
20	2.0 kW
30	3.0 kW
40	4.0 kW
50	5.0 kW
70	7.0 kW

3rd digit - Power Supply Voltage	
Code	Specification
A	200 VAC

4th digit - Serial Encoder	
Code	Specification
7	24-bit absolute
F	24-bit incremental

5th digit - Design Revision Order	
Code	Specification
A	

6th digit - Shaft End	
Code	Specification
2	Straight without key
6	Straight with key and tap
B	With two flat seats

7th digit - Options	
Code	Specification
1	Without options
C	With holding brake (24 VDC)
E	With oil seal and holding brake (24 VDC)
S	With oil seal

### SGM7J

Sigma-7 Series  
Servomotors:  
SGM7J

01   A   7   A   2   1  
1st + 2nd   3rd   4th   5th   6th   7th   digit

1st + 2nd digit - Rated Output	
Code	Specification
A5	50 W
01	100 W
C2	150 W
02	200 W
04	400 W
06	600 W
08	750 W

3rd digit - Power Supply Voltage	
Code	Specification
A	200 VAC

4th digit - Serial Encoder	
Code	Specification
7	24-bit absolute
F	24-bit incremental

5th digit - Design Revision Order	
Code	Specification
A	

6th digit - Shaft End	
Code	Specification
2	Straight without key
6	Straight with key and tap
B	With two flat seats

7th digit - Options	
Code	Specification
1	Without options
C	With holding brake (24 VDC)
E	With oil seal and holding brake (24 VDC)
S	With oil seal

### SGM7G

Sigma-7 Series  
Servomotors:  
SGM7G

03   A   7   A   2   1  
1st + 2nd   3rd   4th   5th   6th   7th   digit

1st + 2nd digit - Rated Output	
Code	Specification
03	300 W
05	450 W
09	850 W
13	1.3 kW
20	1.8 kW
30	2.9 kW*
44	4.4 kW
55	5.5 kW
75	7.5 kW
1A	11 kW
1E	15 kW

3rd digit - Power Supply Voltage	
Code	Specification
A	200 VAC

4th digit - Serial Encoder	
Code	Specification
7	24-bit absolute
F	24-bit incremental

5th digit - Design Revision Order	
Code	Specification
A	

6th digit - Shaft End		
Code	Specification	
2	Straight without Key	0.45 kW
		1.8 kW
		2.9 kW
6	Straight shaft with key and tap	0.85 kW
		1.3 kW

7th digit - Options	
Code	Specification
1	Without options
C	With holding brake (24 VDC)
E	With oil seal and holding brake (24 VDC)
S	With oil seal

\* The rated output is 2.4 kW if you combine the SGM7G-30A with the SGD7S-200A.

# Model Designations 200 V

## SERVOPACKs Single Axis Amplifier

**SGD7S - R70 A 00 A 001**

Sigma-7 Series      1st ... 3rd      4th      5th + 6th      7th      8th ... 10th      digit  
Sigma-7S Models

1st ... 3rd digit - Maximum Applicable Motor Capacity	
Code	Specification
Three-phase, 200 V	
R70*1	0.05 kW
R90*1	0.1 kW
1R6*1	0.2 kW
2R8*1	0.4 kW
3R8	0.5 kW
5R5*1	0.75 kW
7R6	1.0 kW
120	1.5 kW
180	2.0 kW
200	3.0 kW
330	5.0 kW
470	6.0 kW
550	7.5 kW
590	11 kW
780	15 kW

4th digit - Voltage	
Code	Specification
A	200 V AC

5th + 6th digit - Interface	
Code	Specification
00	Analog Voltage/ Pulse Train Reference
10	MECHATROLINK-II communication Reference
20	MECHATROLINK-III communication Reference
A0	EtherCAT communication Reference
E0	Command Option Attachable Type

7th digit - Design Revision Order	
Code	Specification
A	

8th ... 10th digit - Hardware Options Specifications		
Code	Specification	Applicable Models
-	Without Options	All models
001	Rack-mounted	SGD7S-R70A to -330A
	Duct-mounted	SGD7S-470A to -780A
002	Varnished	All models
008	Single-phase, 200 V power input	1.5 kW
00A	Varnished and single- phase power input	All models

The same SERVOPACKs are used for both Rotary Servomotors and Linear Servomotors.

\*1 You can use these models with either a single-phase or three-phase input.

## Double Axis Amplifier

**SGD7W - 1R6 A 20 A 001**

Sigma-7 Series      1st ... 3rd      4th      5th + 6th      7th      8th ... 10th      digit  
Sigma-7W Models

1st ... 3rd digit - Maximum Applicable Motor Capacity	
Code	Specification
Three-phase, 200 V	
1R6*1	2 × 0.2 kW
2R8*1	2 × 0.4 kW
5R5*1	2 × 0.75 kW
7R6	2 × 1.0 kW

4th digit - Voltage	
Code	Specification
A	200 V AC

5th + 6th digit - Interface	
Code	Specification
20	MECHATROLINK-III communication Reference

7th digit - Design Revision Order	
Code	Specification
A	

8th ... 10th digit - Hardware Options Specifications		
Code	Specification	Applicable Models
-	Without Options	All models
001	Rack-mounted	
002	Varnished	

The same SERVOPACKs are used for both Rotary Servomotors and Linear Servomotors.

\*1 You can use these models with either a single-phase or three-phase input.

# The 400 V Series

## Amplifier

- ▶ Space saving Bookstyle for side-by-side mounting
- ▶ Embedded Fieldbus
  - EtherCAT
  - MECHATROLINK-III\*
- ▶ Single & Double Axis Amplifier
- ▶ European connectors
- ▶ Daisy-Chain-Connection

## Motors

- ▶ Plug-and-Turn connectors according to European standards (M12, M17, M23 and M40)
- ▶ Available from 200 W - 3 kW (- 5 kW\*)



\* Available in the second half of 2016



- ▶ Connectors for Power Supply, EtherCAT, I/O, Encoder, USB, etc.



- ▶ Option units for other Networks, Advanced Safety, Encoder




- ▶ Connector for Digital Operator



- ▶ Power Connectors for Motor, Brake, Braking Resistor
- ▶ Metal Sheet for Motor Cable Shielding

# Product Overview 400 V

## Servomotors

Rotary	<p>SGM7J</p> <ul style="list-style-type: none"> <li>▶ Medium inertia, high speed</li> <li>▶ 200 W - 1.5 kW</li> </ul> 	<p>SGM7A</p> <ul style="list-style-type: none"> <li>▶ Low inertia, high speed</li> <li>▶ 200 W - 3.0 kW (- 5 kW*)</li> </ul> 	<p>SGM7G</p> <ul style="list-style-type: none"> <li>▶ Medium inertia, low speed, high torque</li> <li>▶ 450 W - 2.9 kW (- 4,4 kW*)</li> </ul> 	
	<p>Linear</p> <p>SGLFW2</p> <ul style="list-style-type: none"> <li>▶ Model with F-type iron core</li> <li>▶ Rated: 45 N - 2520 N Peak: 135 N - 7560 N</li> </ul> 			

## SERVOPACKs

Single Axis	<p>SGD7S-□□□DA0</p> <p>EtherCAT communication Reference</p> 	<p>SGD7S-□□□D30</p> <p>Mechatrolink III communication Reference</p> 
	<p>Double Axis</p> <p>SGD7W-□□□DA0A*</p> <p>EtherCAT communication Reference</p> 	<p>SGD7W-□□□D30A*</p> <p>Mechatrolink III communication Reference</p> 

## Option Modules

<p>SGDV-OSA01A</p> <p>Safety Module</p>	<p>SGDV-OFA01A</p> <p>Fully closed Loop Module</p>
---	--



## Combination of Rotary Servomotors and SERVOPACKs

Rotary Servomotor Model		Rated Output [W]	SERVOPACK Model
			SGD7S-□□□□
SGM7J (Medium inertia, high speed) 3000 min <sup>-1</sup>	SGM7J-02D	200	1R9D
	SGM7J-04D	400	
	SGM7J-08D	750	3R5D
	SGM7J-15D	1,500	5R4D
SGM7A (Low inertia, high speed) 3000 min <sup>-1</sup>	SGM7A-02D	200	1R9D
	SGM7A-04D	400	
	SGM7A-08D	750	3R5D
	SGM7A-10D	1,000	
	SGM7A-15D	1,500	5R4D
	SGM7A-20D	2,000	5R5A
	SGM7A-25D	2,500	120D
	SGM7A-30D	3,000	
SGM7A-50D*	5,000	170D*	
SGM7G (Medium inertia, large torque) 1500 min <sup>-1</sup>	SGM7G-05D	450	1R9D
	SGM7G-09D	850	3R5D
	SGM7G-13D	1,300	5R4D
	SGM7G-20D	1,800	8R4D
	SGM7G-30D	2,900	120D
	SGM7G-44D*	4,400	170D*

## Combination of Linear Servomotors and SERVOPACKs

Rotary Servomotor Model		Rated Output Force [N]	SERVOPACK Model
			SGD7S-□□□□
SGLFW2 F-Type with iron core	SGLFW2-30D070A	45.0	1R9D
	SGLFW2-30D120A	90.0	1R9D
	SGLFW2-30D230A	180.0	1R9D
	SGLFW2-45D200A	280.0	3R5D
	SGLFW2-45D380A	560.0	8R4D
			5R4D
	SGLFW2-90D200A	560.0	5R4D
	SGLFW2-90D380A	1,120.0	120D
	SGLFW2-90D560A	1,680.0	170D*
SGLFW2-1DD380A	1,680.0	170D*	

\* Available in the second half of 2016

# Model Designations 400 V

## Rotary Servomotors

**SGM7A** - 02 D 7 F 2 1  
 1st + 2nd 3rd 4th 5th 6th 7th digit

Sigma-7 Series  
Servomotors:  
SGM7A

1st + 2nd digit - Rated Output	
Code	Specification
02	200 W
04	400 W
08	750 W
10	1.0 kW
15	1.5 kW
20	2.0 kW
25	2.5 kW
30	3.0 kW
50	5.0 kW

3rd digit - Power Supply Voltage	
Code	Specification
D	400 V AC

4th digit - Serial Encoder	
Code	Specification
7	24-bit absolute
F	24-bit incremental

5th digit - Design Revision Order	
Code	Specification
F	

6th digit - Shaft End	
Code	Specification
2	Straight without key
6	Straight with key and tap

7th digit - Options	
Code	Specification
1	Without options
C	With holding brake (24 VDC)
F*	With dust seal
H*	With dust seal and holding brake (24 VDC)

\* This option is supported only for 1.0-kW to 3.0-kW Servomotors.

**SGM7J** - 02 D 7 F 2 1  
 1st + 2nd 3rd 4th 5th 6th 7th digit

Sigma-7 Series  
Servomotors:  
SGM7J

1st + 2nd digit - Rated Output	
Code	Specification
02	200 W
04	400 W
08	750 W
15	1.5 kW

3rd digit - Power Supply Voltage	
Code	Specification
D	400 V AC

4th digit - Serial Encoder	
Code	Specification
7	24-bit absolute
F	24-bit incremental

5th digit - Design Revision Order	
Code	Specification
F	

6th digit - Shaft End	
Code	Specification
2	Straight without key
6	Straight with key and tap

7th digit - Options	
Code	Specification
1	Without options
C	With holding brake (24 VDC)

**SGM7G** - 05 D 7 F 2 1  
 1st + 2nd 3rd 4th 5th 6th 7th digit

Sigma-7 Series  
Servomotors:  
SGM7G

1st + 2nd digit - Rated Output	
Code	Specification
05	450 W
09	850 W
13	1.3 kW
20	1.8 kW
30	2.9 kW
44	4.4 kW *1

3rd digit - Power Supply Voltage	
Code	Specification
D	400 V AC

4th digit - Serial Encoder	
Code	Specification
7	24-bit absolute
F	24-bit incremental

5th digit - Design Revision Order	
Code	Specification
F	

6th digit - Shaft End	
Code	Specification
2	Straight without key
6	Straight with key and tap
S*2	Straight without key
K*2	Straight with key and tap

7th digit - Options	
Code	Specification
1	Without options
C	With holding brake (24 VDC)
F	With dust seal
H	With dust seal and holding brake (24 VDC)

\*2 The shaft end codes are different for 850-W and 1.3-kW Servomotors.  
 The shaft diameter for 850-W Servomotors is 19 mm.  
 The shaft diameter for 1.3-kW Servomotors is 22 mm.

# SERVOPACKs

## Single Axis Amplifier

**SGD7S - 1R9 D A0 B 000 F64**

Sigma-7 Series  
Sigma-7S Models

1st ... 3rd

4th

5th + 6th

7th

8th ... 10th

10th ... 13th digit

1st ... 3rd digit - Maximum Applicable Motor Capacity	
Code	Specification
Three-phase, 400 V	
1R9	0.5 kW
3R5	1.0 kW
5R4	1.5 kW
8R4	2.0 kW
120	3.0 kW

4th digit - Voltage	
Code	Specification
D	400 V AC

5th + 6th digit - Interface	
Code	Specification
A0	EtherCAT communication Reference
30	MECHATROLINK-III *, RJ45

7th digit - Design Revision Order	
Code	Specification
A	

8th ... 10th digit - Hardware Options Specifications		
Code	Specification	Applicable Models
-	Without Options	All models

11th ... 13th digit - FT/EX Specification	
Code	Specification
F64	400 V AC

## Double Axis Amplifier \*

**SGD7W - 2R6 D A0 A 000 F64**

Sigma-7 Series  
Sigma-7W Models

1st ... 3rd

4th

5th + 6th

7th

8th ... 10th

10th ... 13th digit

1st ... 3rd digit - Maximum Applicable Motor Capacity	
Code	Specification
Three-phase, 400 V	
2R6	2 × 0.75 kW
5R4	2 × 1.5 kW

4th digit - Voltage	
Code	Specification
D	400 V AC

5th + 6th digit - Interface	
Code	Specification
A0	EtherCAT communication Reference
30	MECHATROLINK-III, RJ45

7th digit - Design Revision Order	
Code	Specification
A	

8th ... 10th digit - Hardware Options Specifications		
Code	Specification	Applicable Models
-	Without Options	All models

11th ... 13th digit - FT/EX Specification	
Code	Specification
F64	400 V AC

\* Available in the second half of 2016

# YASKAWA

## YASKAWA Europe GmbH

Drives & Motion Division  
Hauptstr. 185  
65760 Eschborn  
Germany

Tel: +49 6196-569 500  
info@yaskawa.eu.com  
www.yaskawa.eu.com

The Sigma-7 Series is CE certified,  
cULus-listed and RoHS-conform.

### International Standards



### Safety Standards

Safety Stop

### RoHS Directive

RoHS Directive Stands for the EU directive on the Restriction of the Use of Certain Hazardous Substances in Electrical and Electronic Equipment

Specifications are subject to change without notice for ongoing product modifications and improvements.  
© YASKAWA Europe GmbH. All Rights reserved.

Literature No. YEU\_MuC\_Sigma7-Series\_EN\_v1\_1215  
Printed in Germany, December 2015